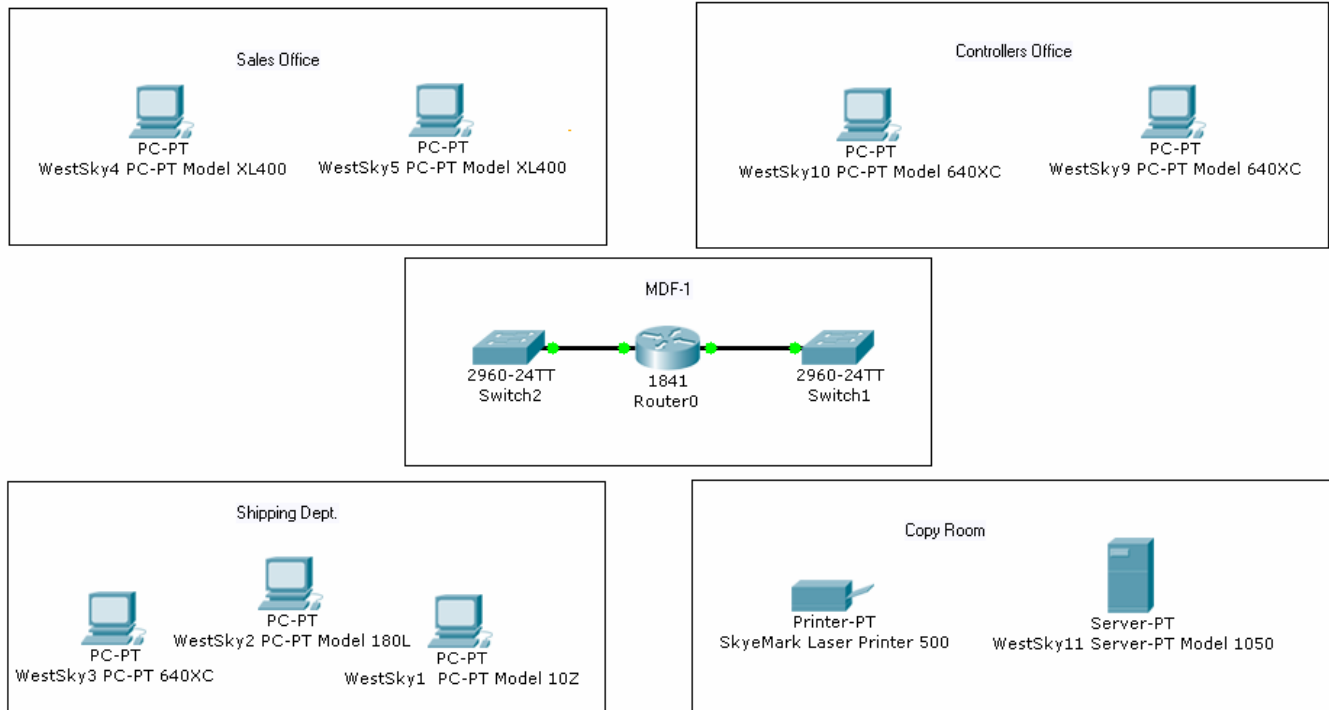


3.1.3.2: Creating Network Diagrams

Topology Diagram



Objectives

- Investigate the customer network.
- Create a network inventory list.
- Create a logical topology diagram.

Background / Preparation

You are the on-site support technician who has been sent to perform a site survey on a customer network in preparation for a network upgrade. Using the information provided in the simulated network, create a logical topology diagram of the network, and complete the inventory sheet.

Note: This activity begins by showing 100% completion, because the purpose is only to demonstrate the process used to design a network upgrade. This activity is not graded.

Step 1: Create the inventory list.

Begin the site survey with the router labeled Router0. Use the inventory sheet in the handout to document all the information.

- Click on the router and use the information found on the Config tab and this Packet Tracer network diagram to complete the inventory list.

- b. Continue this process with each network device until the entire network is documented on the Inventory List on the next page.

Note: All PCs and servers are running Linux, and all Cisco devices are running Cisco IOS software. The connectivity for the PCs can be found using the **show running-config** command on the switches.

Example

Device Name	Location	Brand and Model	Operating System *All Cisco devices use IOS	IP Addresses	Connectivity
R14	MDF-1	Cisco 2621	IOS	FA0/0 192.168.10.10/24 FA0/1 172.16.10.10/24	100 MB Ethernet to Switch 1 100 MB Ethernet to Switch 2

Inventory List

Device Name	Location	Brand and Model	Operating System *All Cisco devices use IOS	IP Addresses	Connectivity

Step 2: Draw the logical topology diagram.

Use the information collected on the inventory sheet and the Packet Tracer network diagram to draw a logical network diagram of the customer network.

Logical Topology Diagram