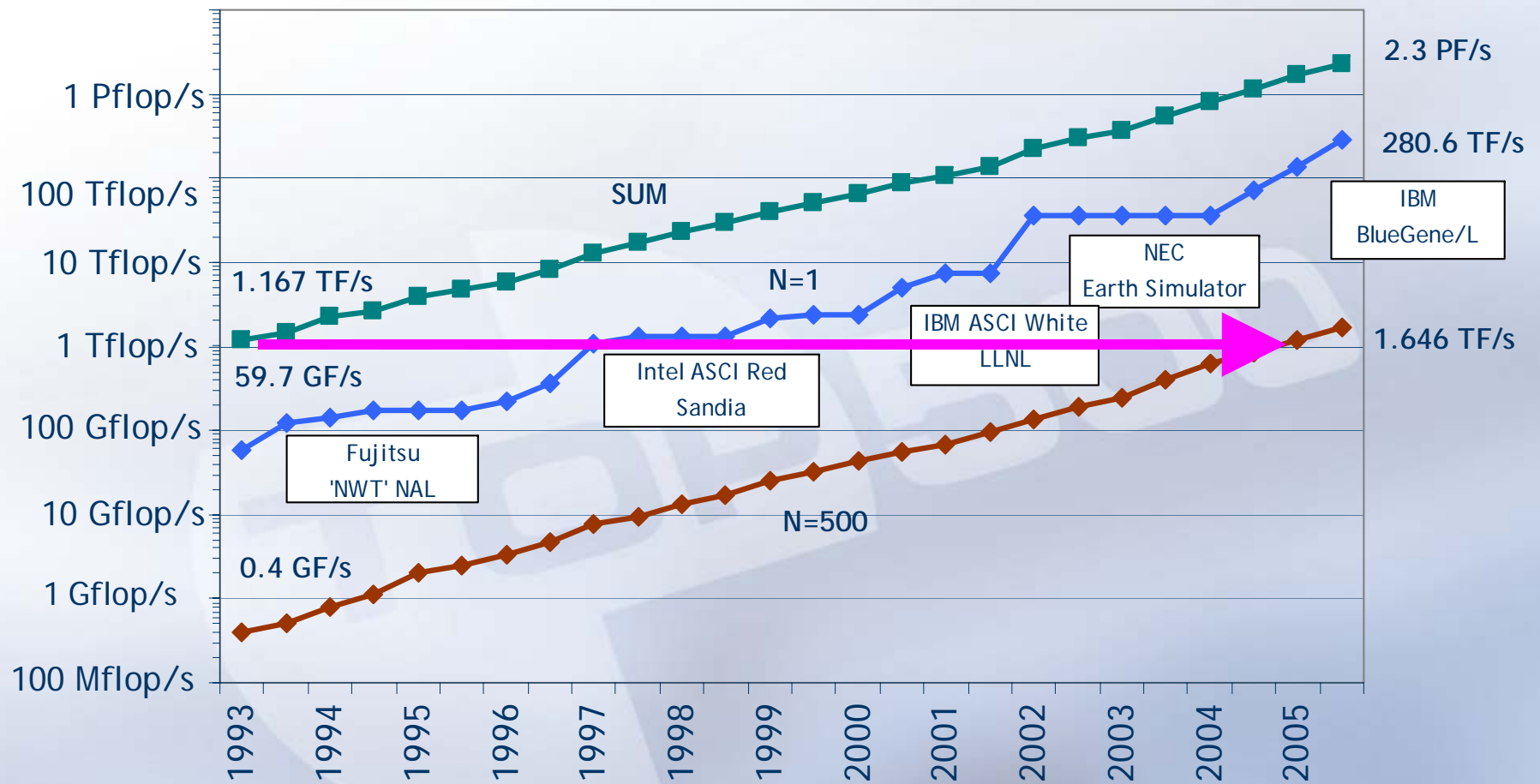
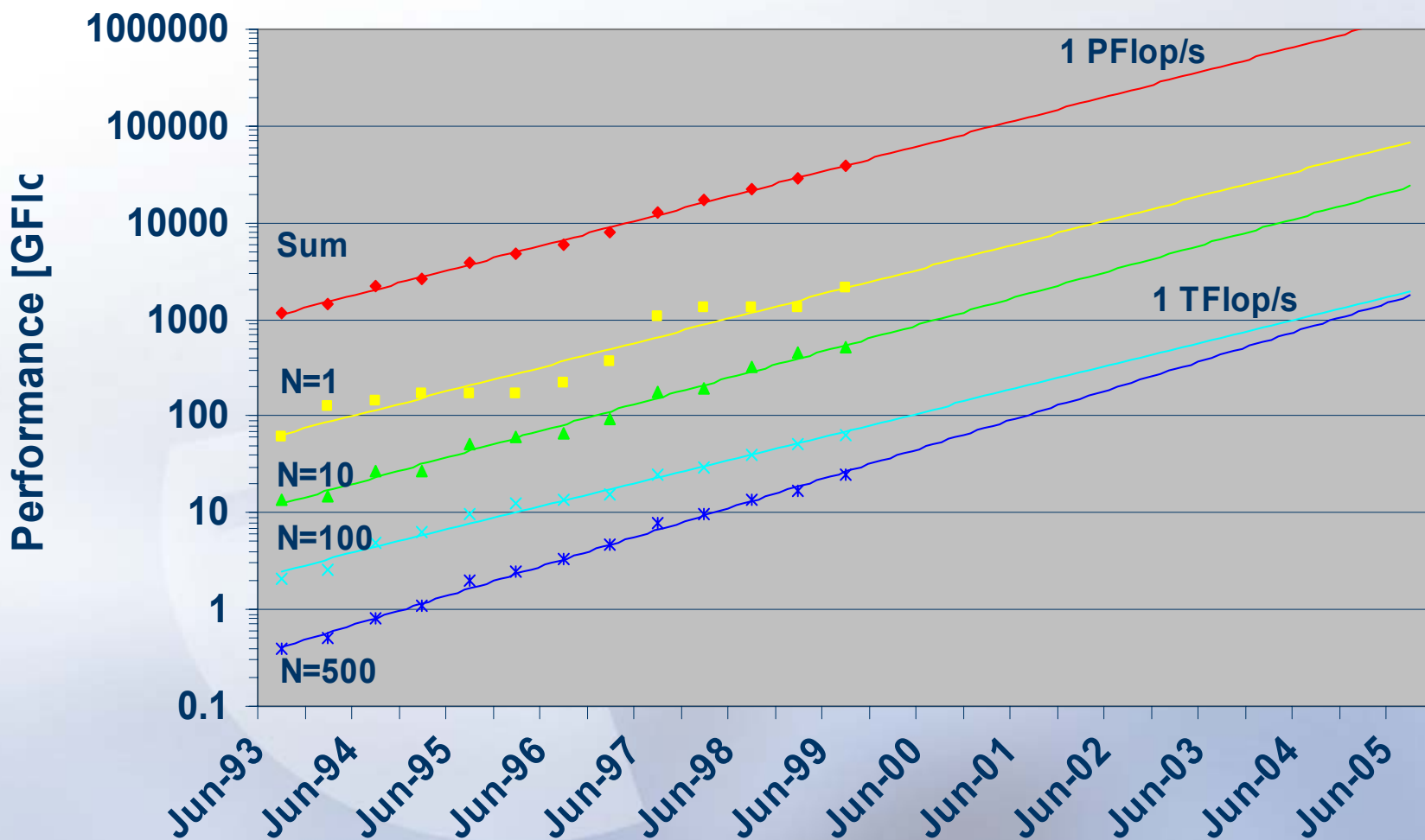




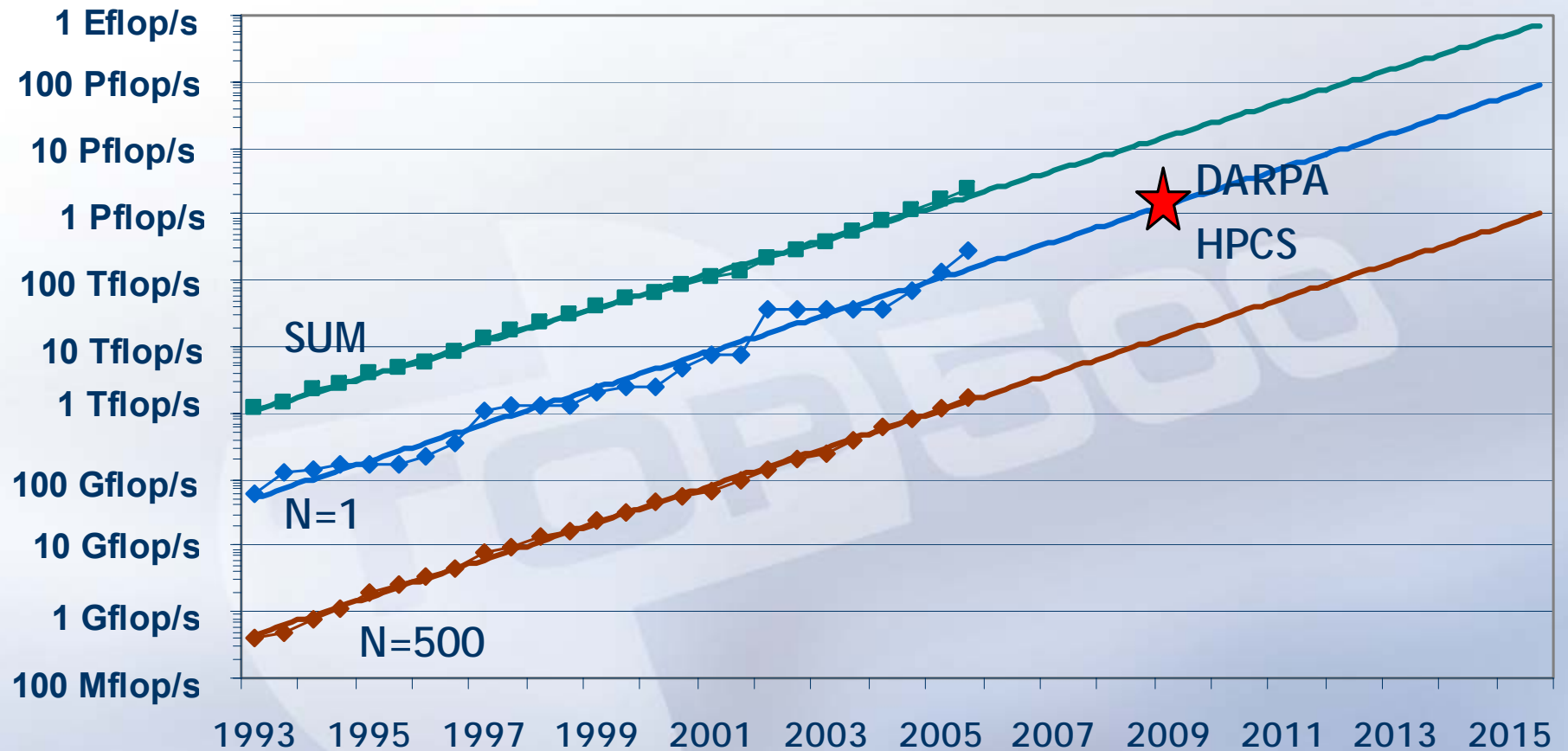
26th TOP500 list

SC|05 Conference, Seattle, November 15th, 2005

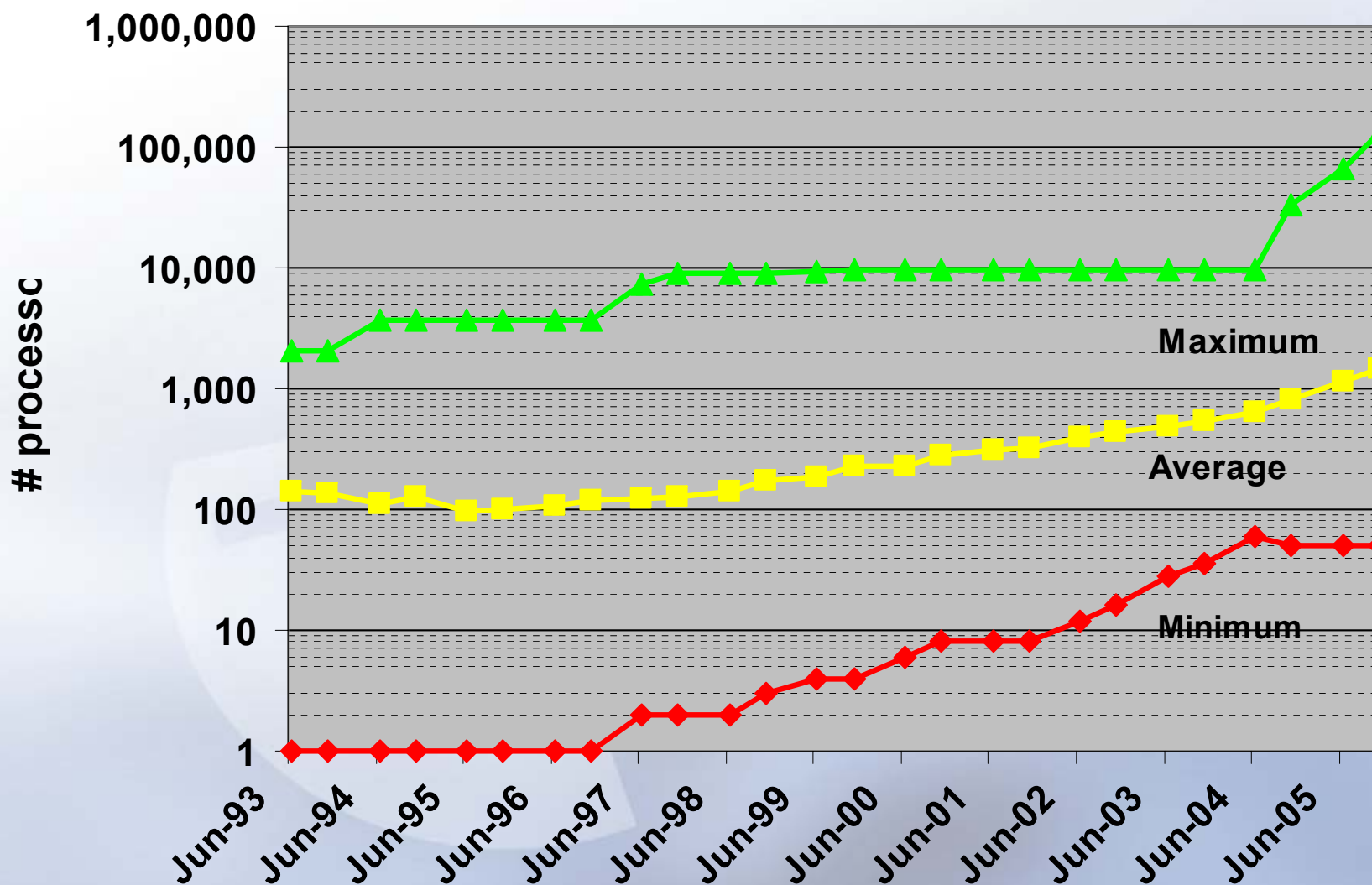




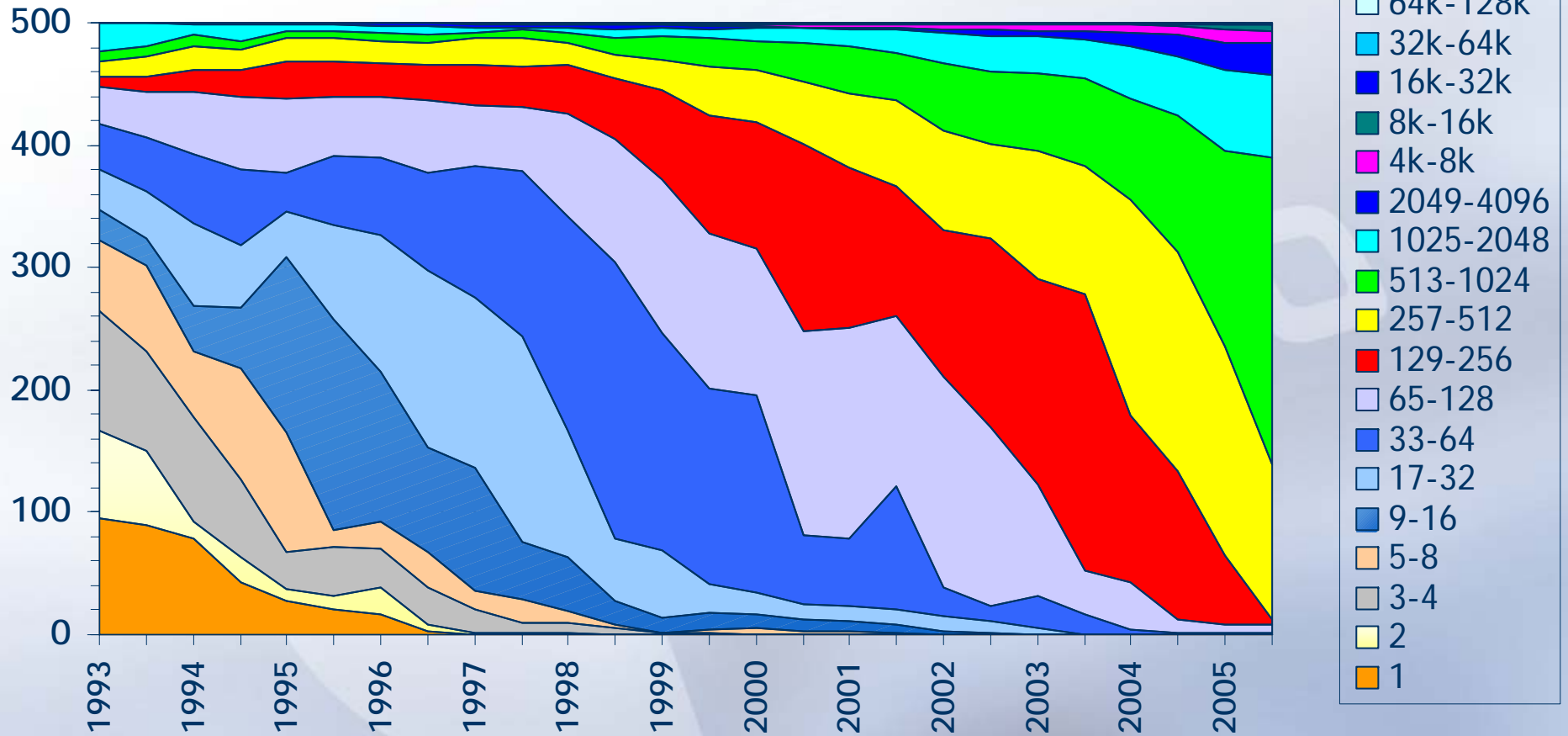
Performance Projection

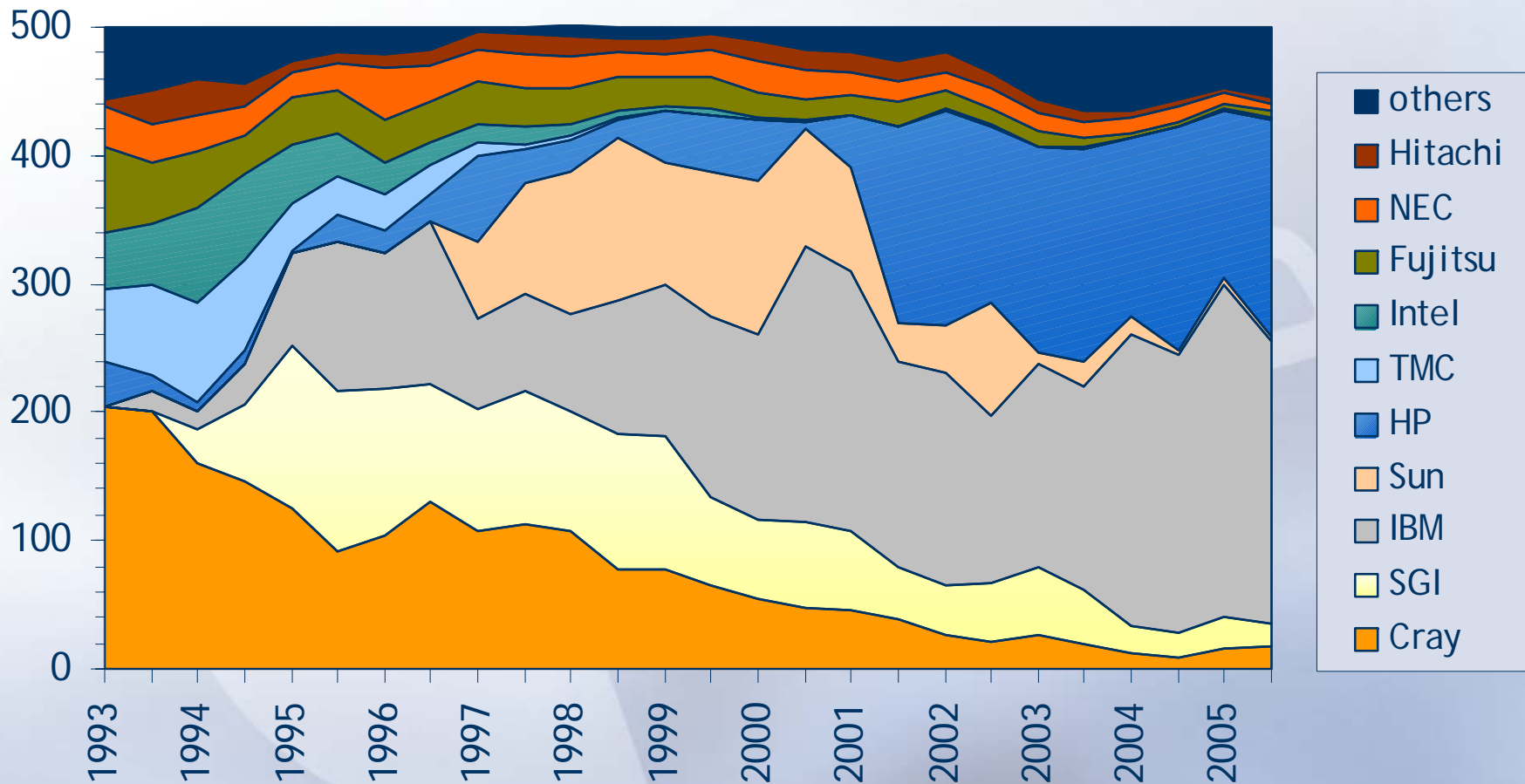


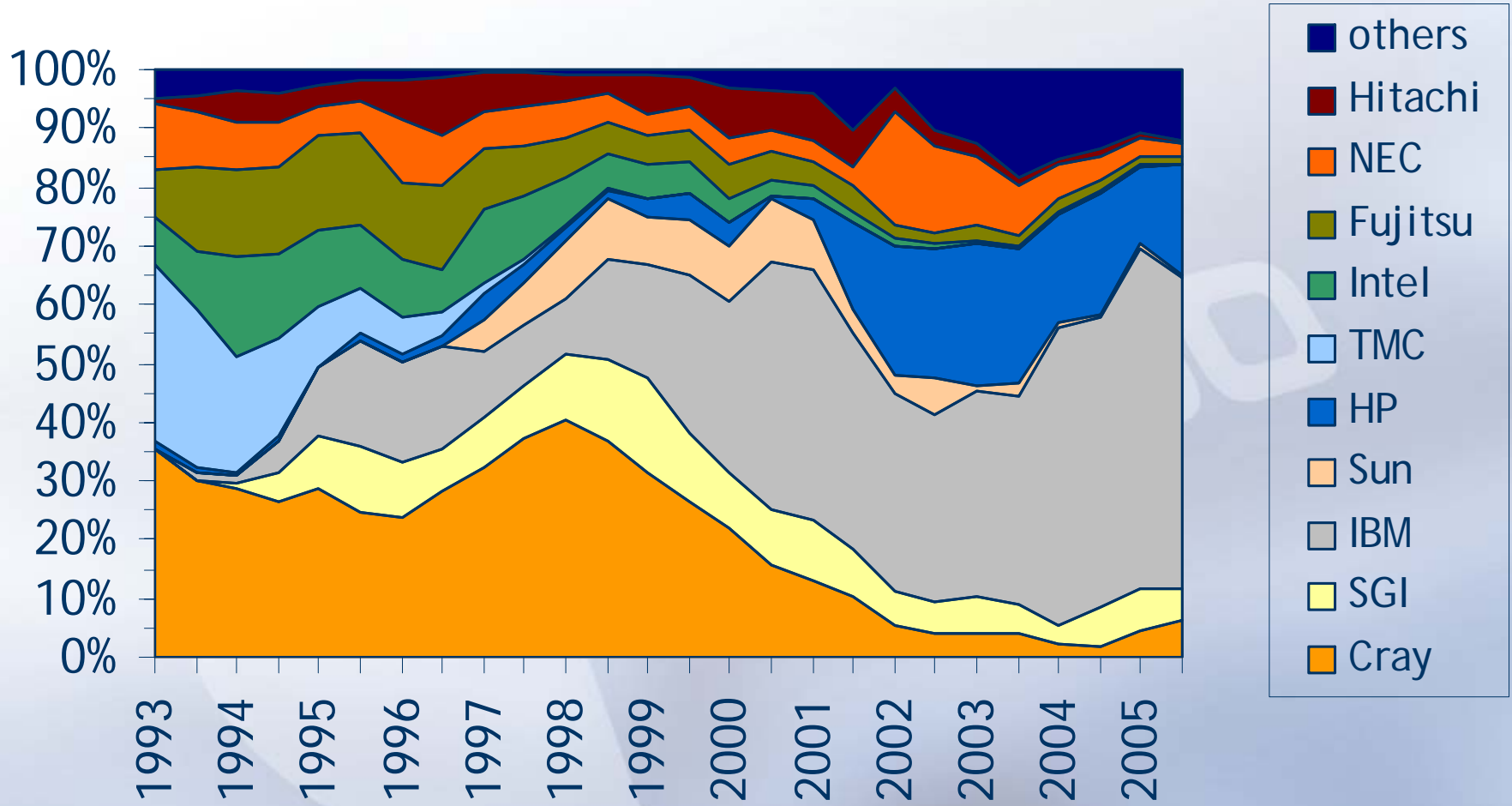
Concurrency Levels

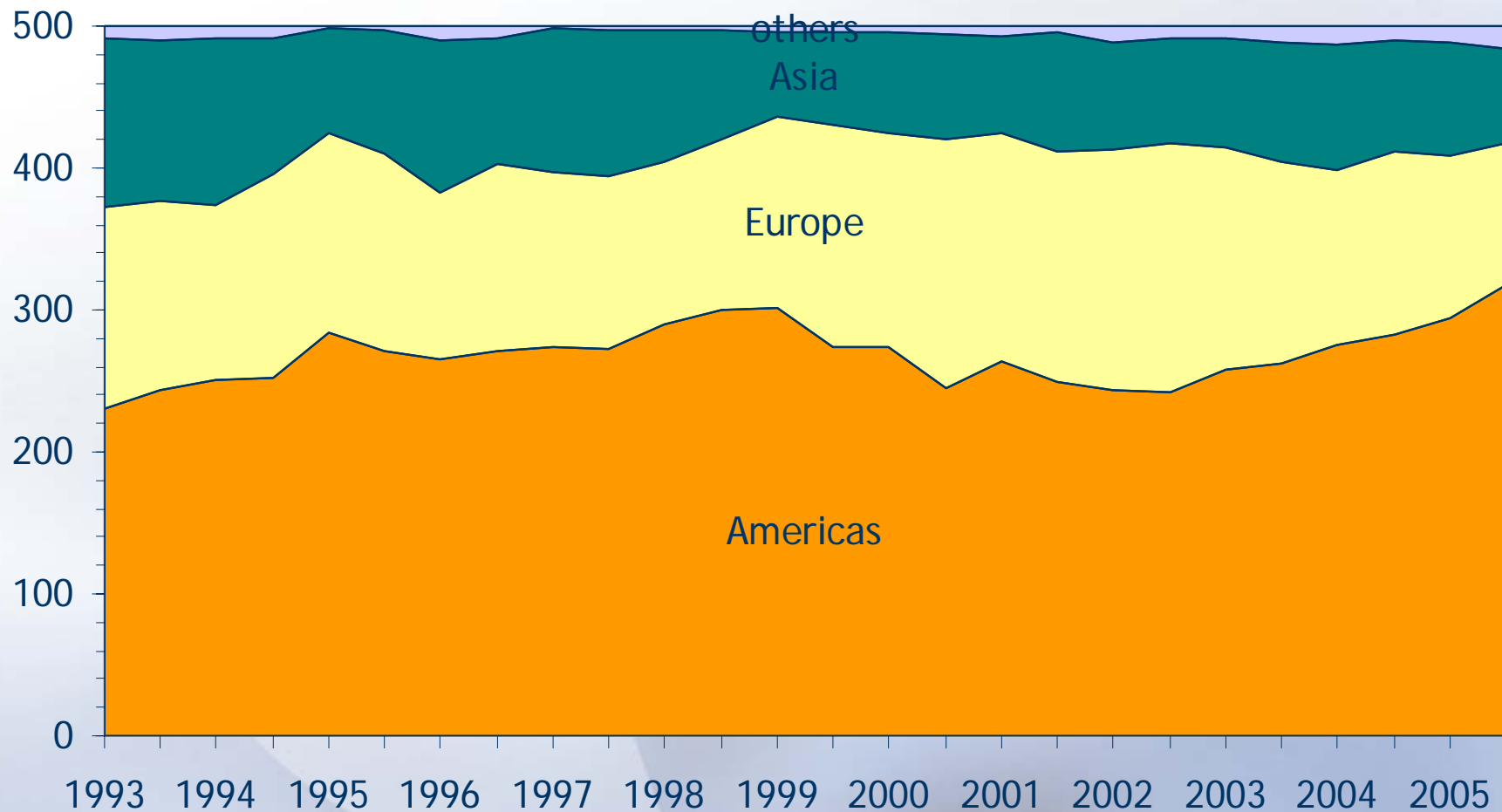


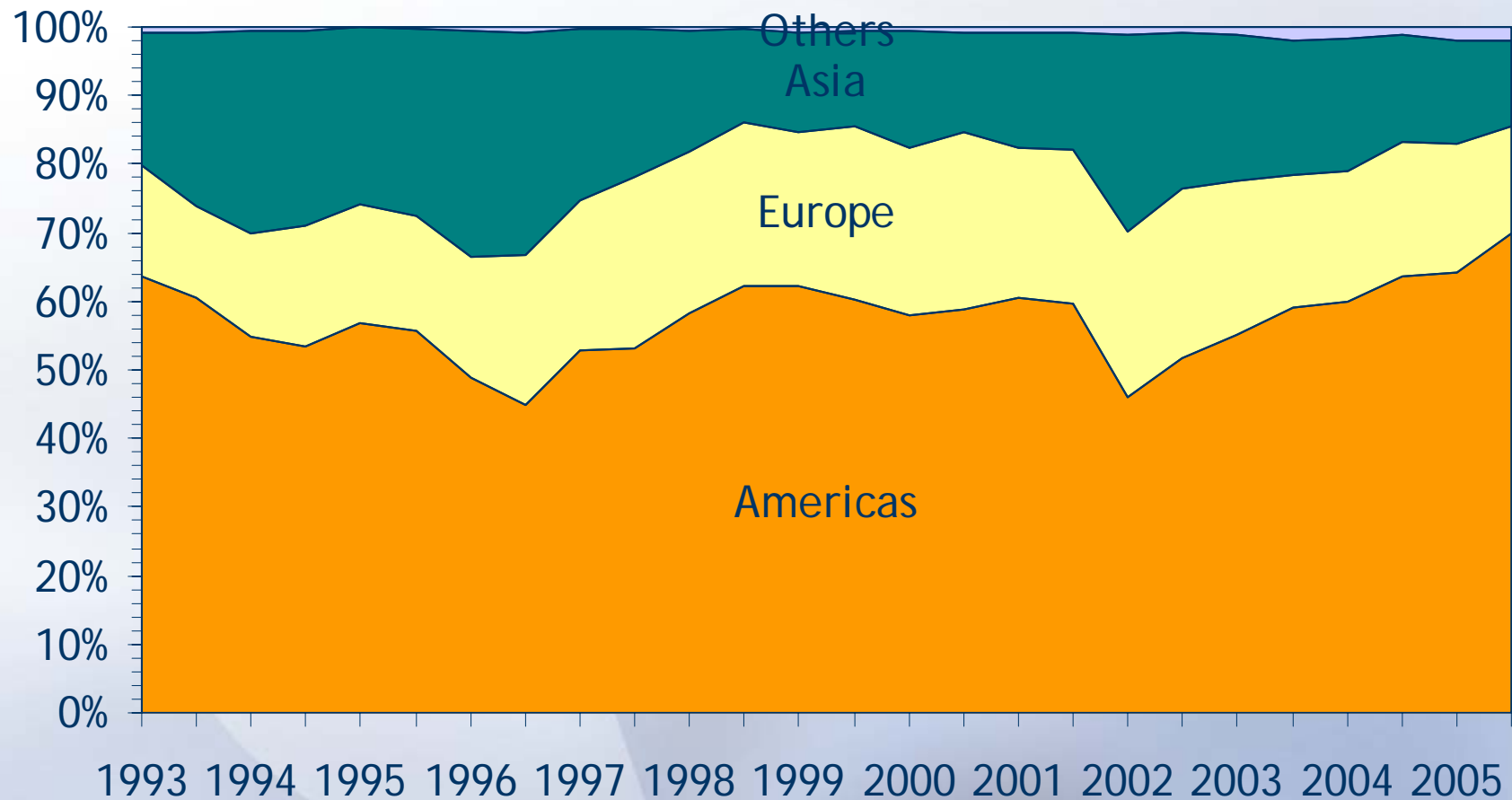
Concurrency Levels

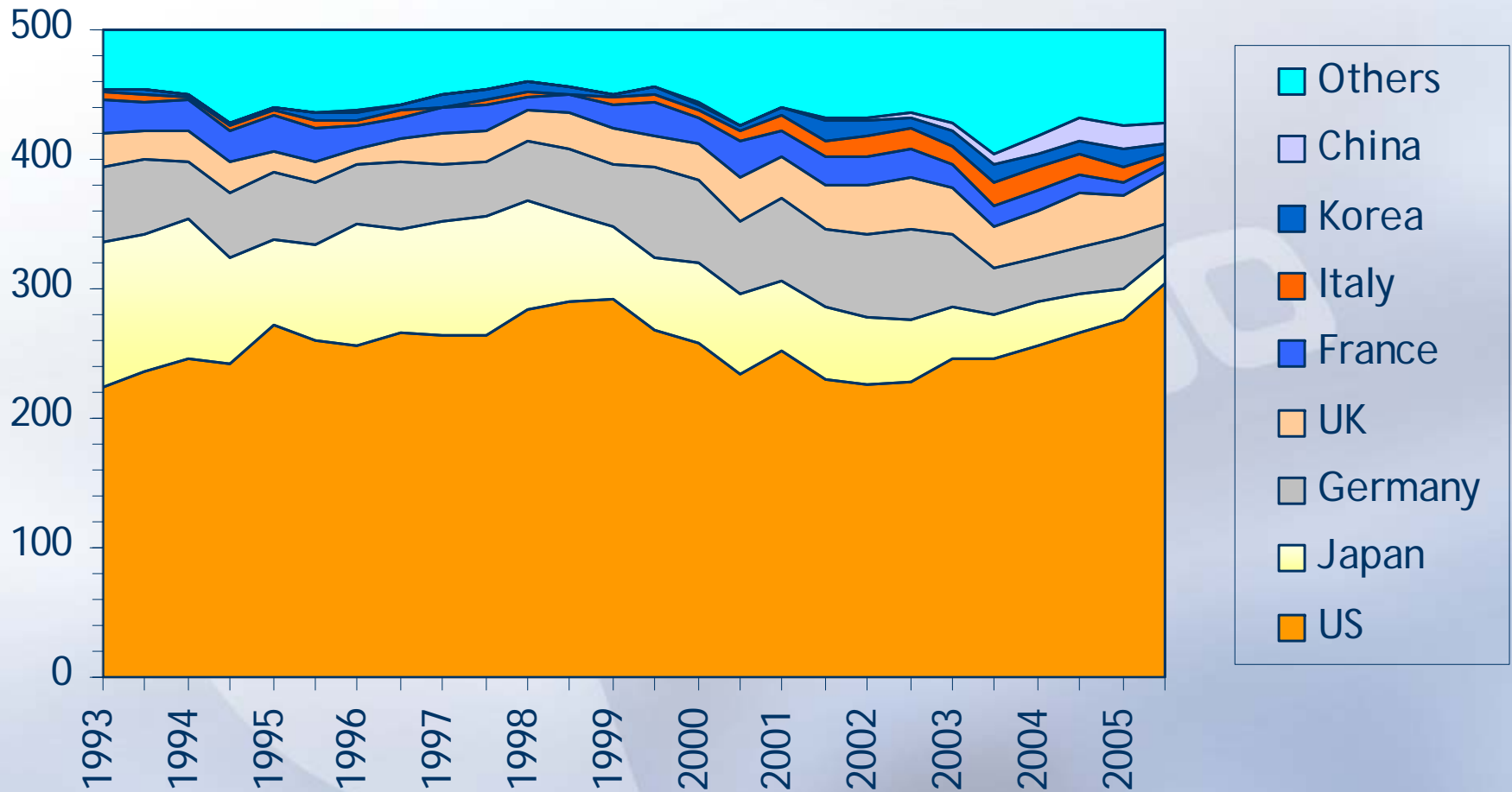


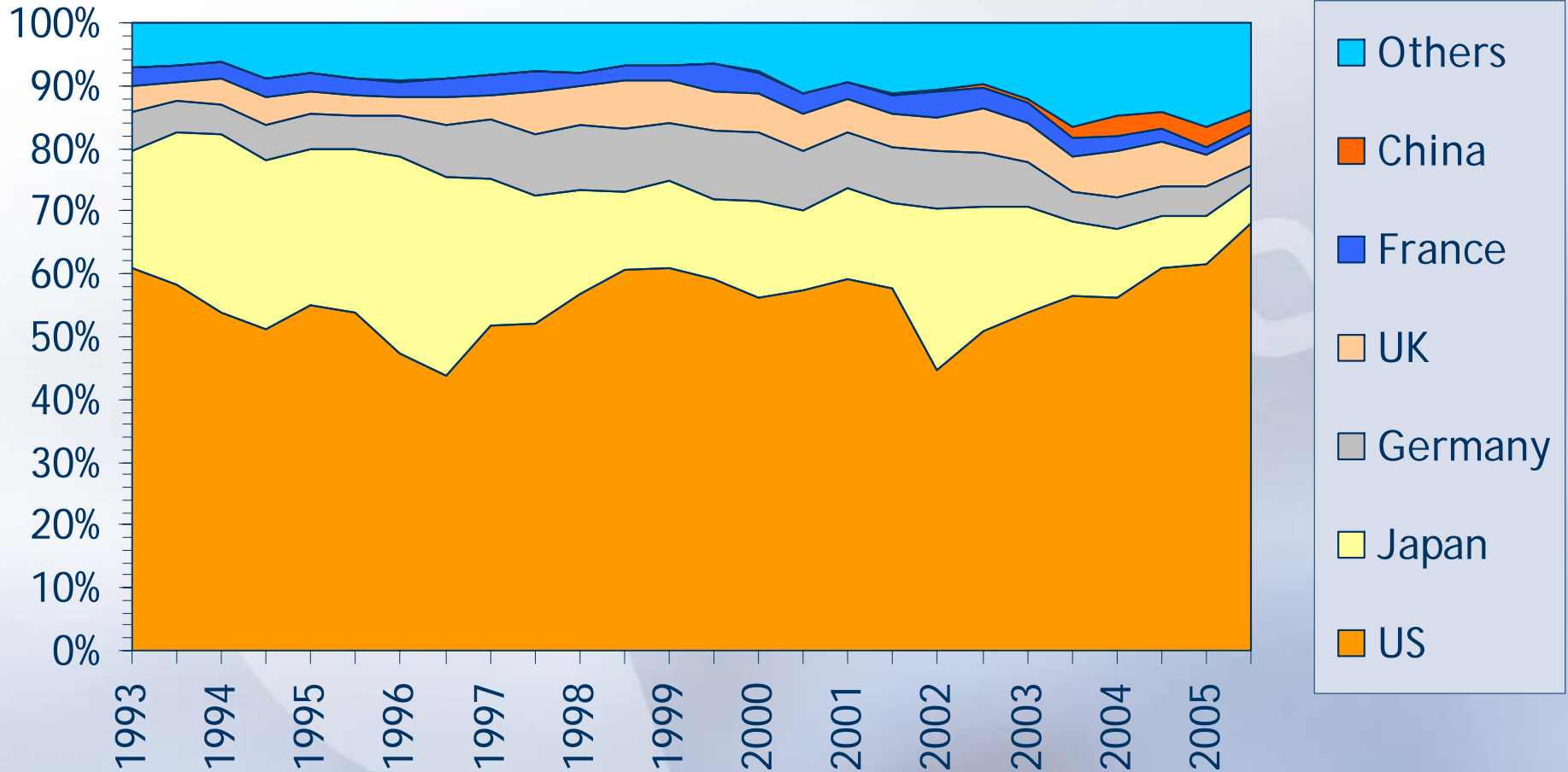


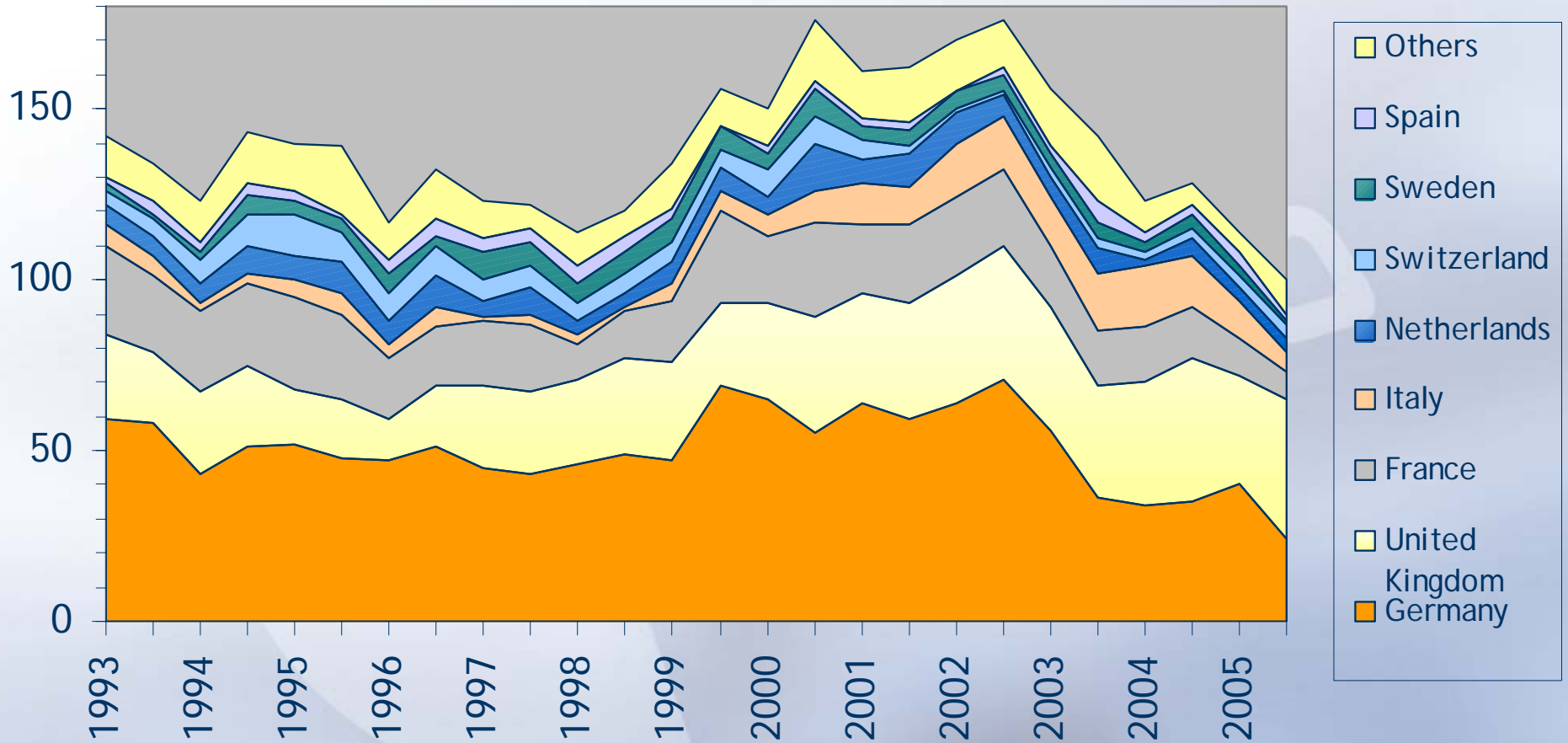


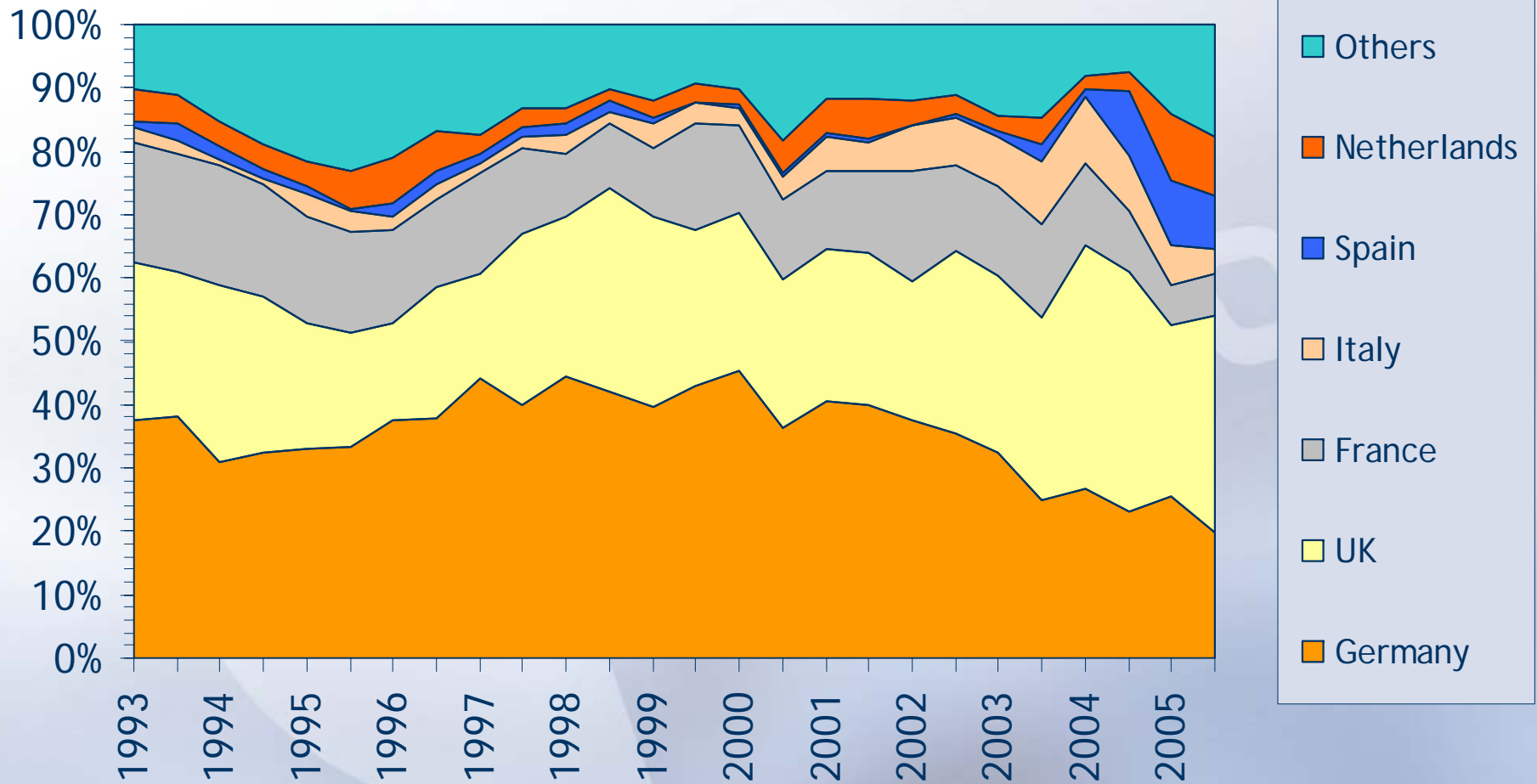


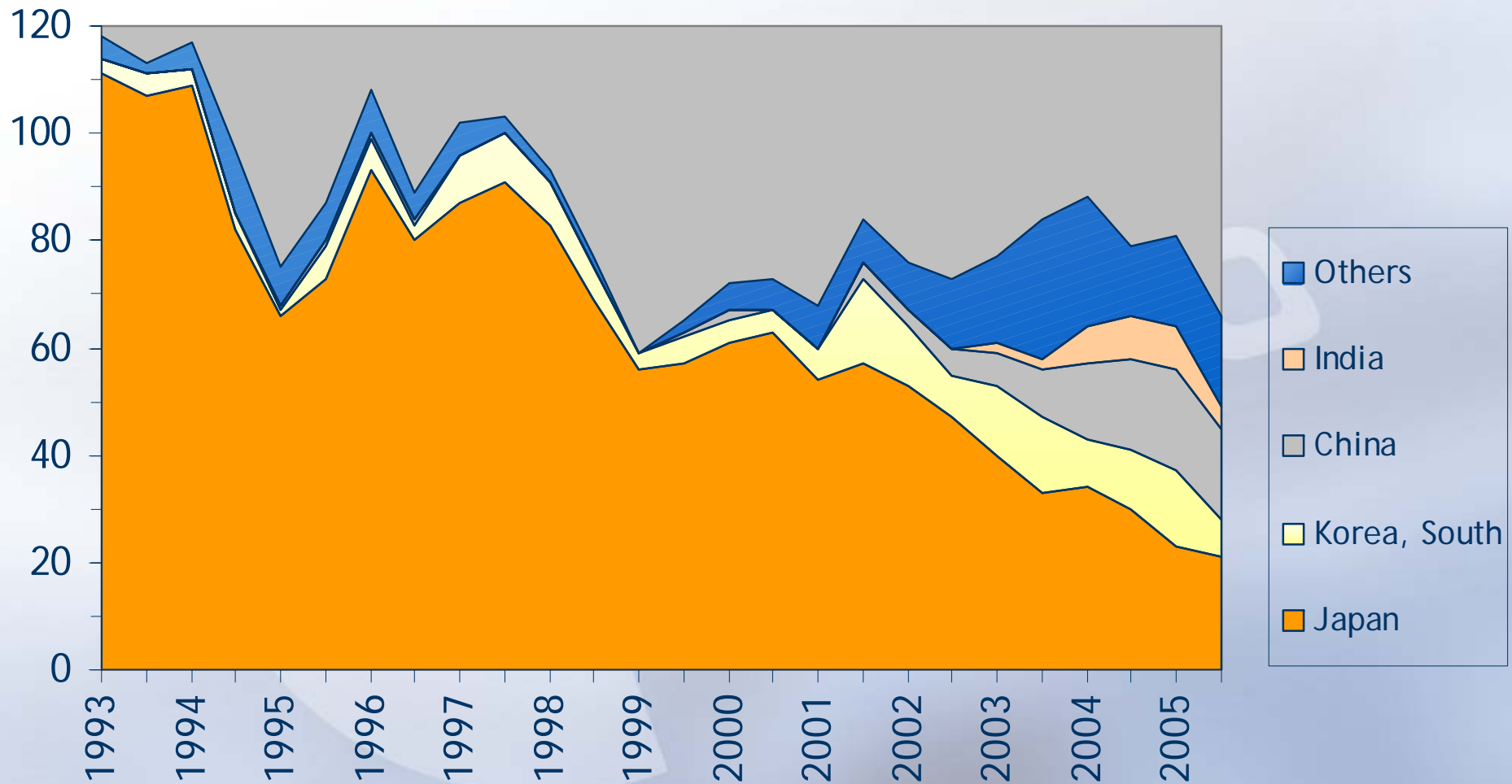




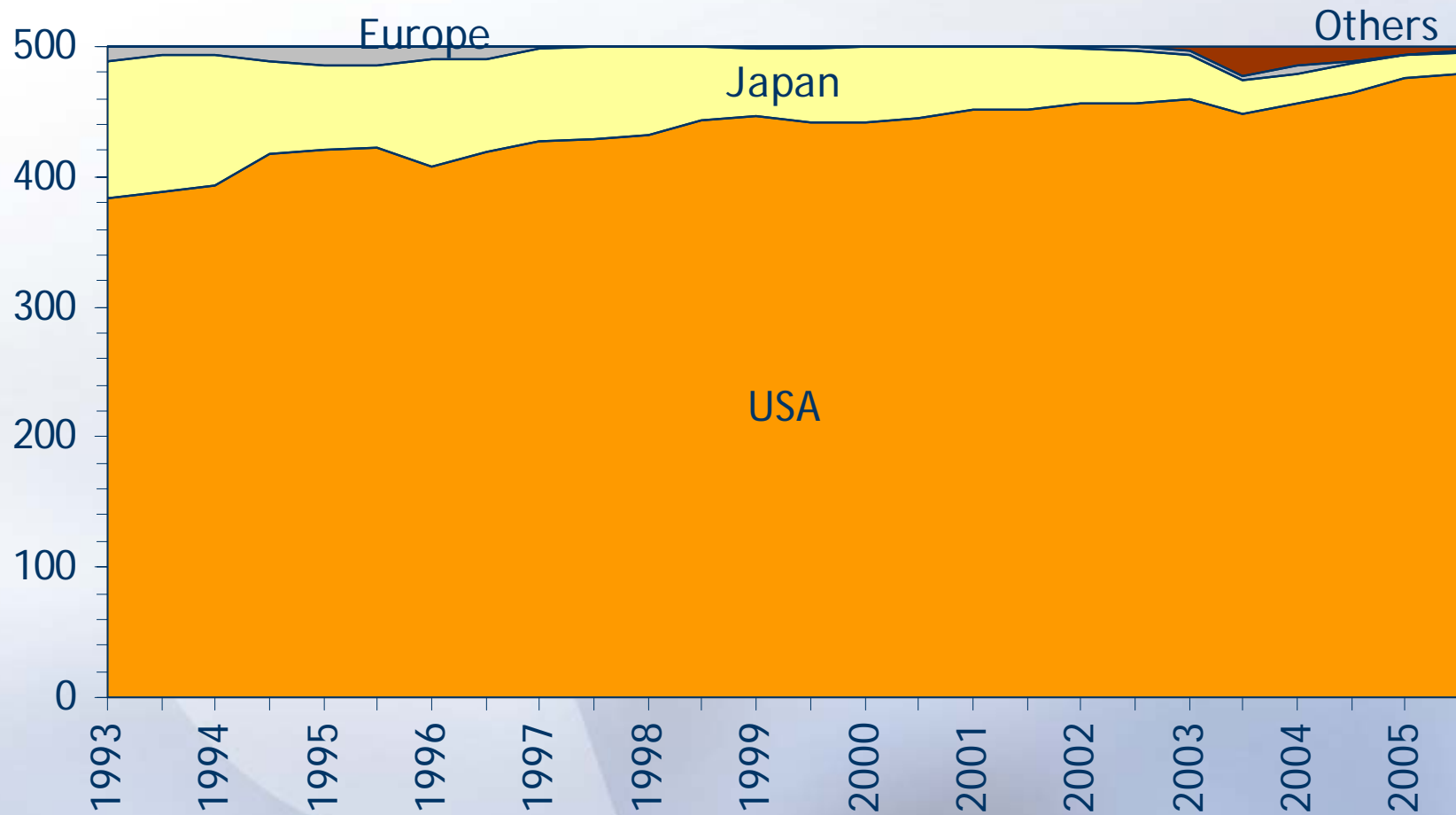


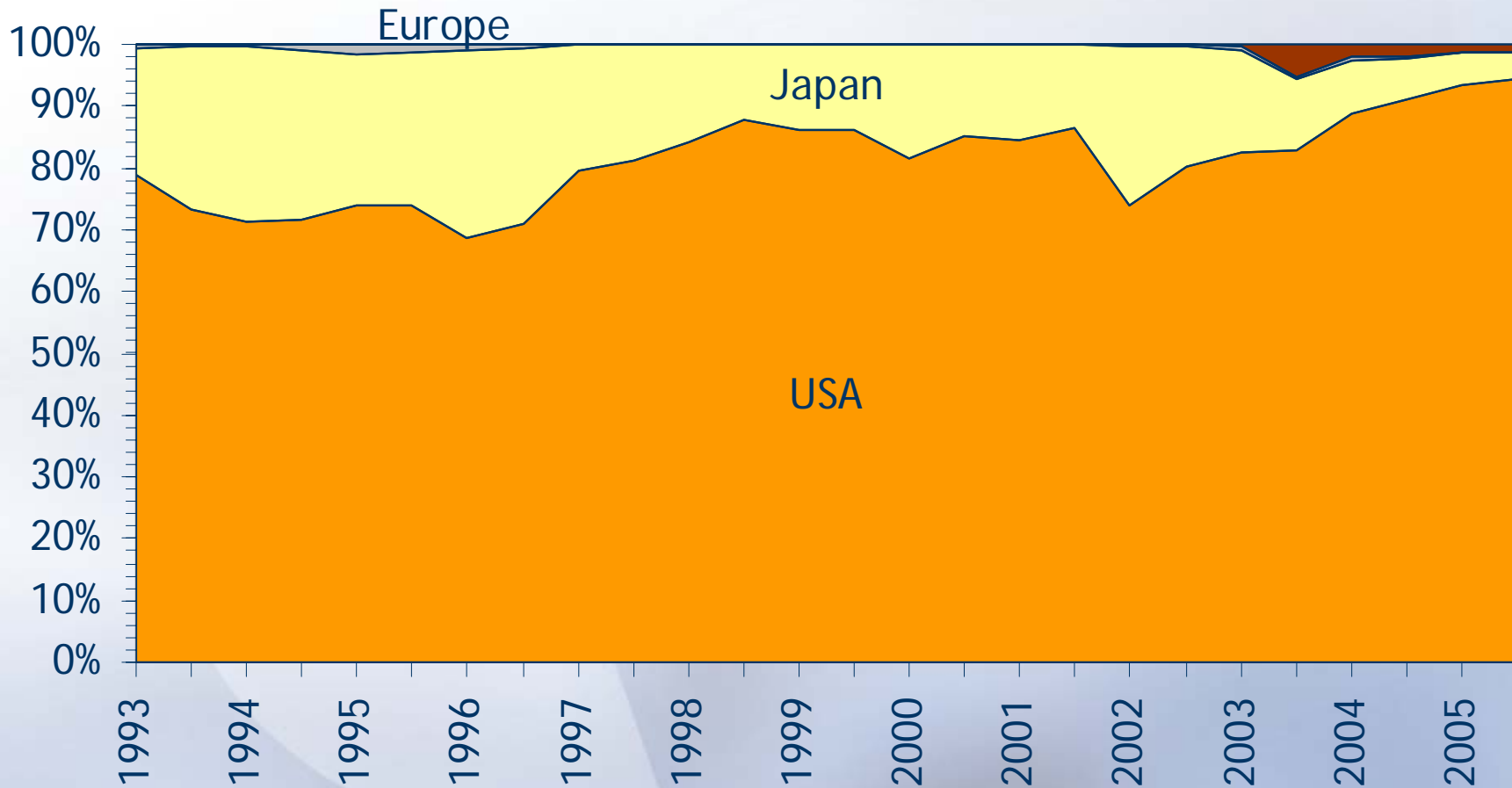


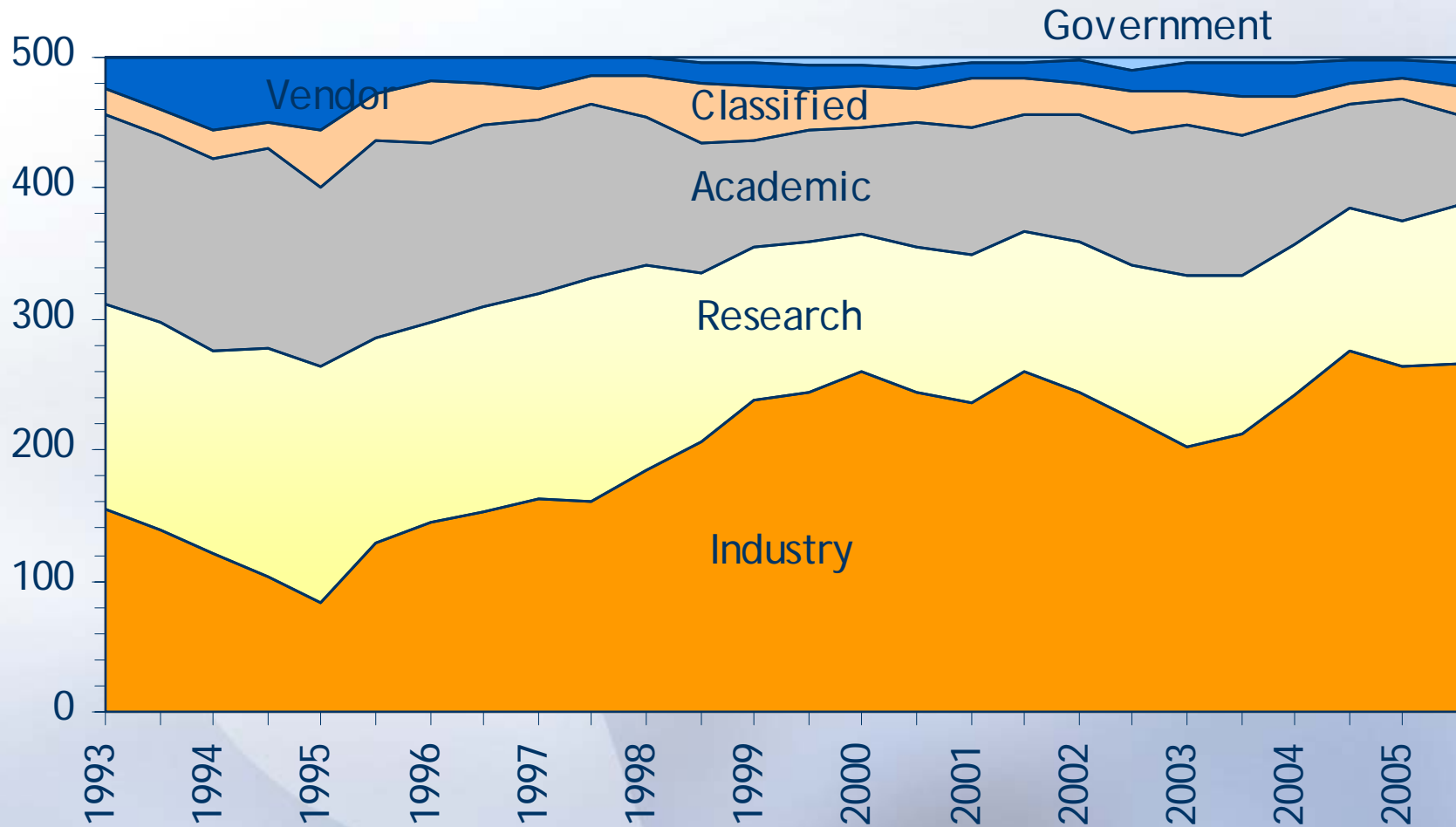


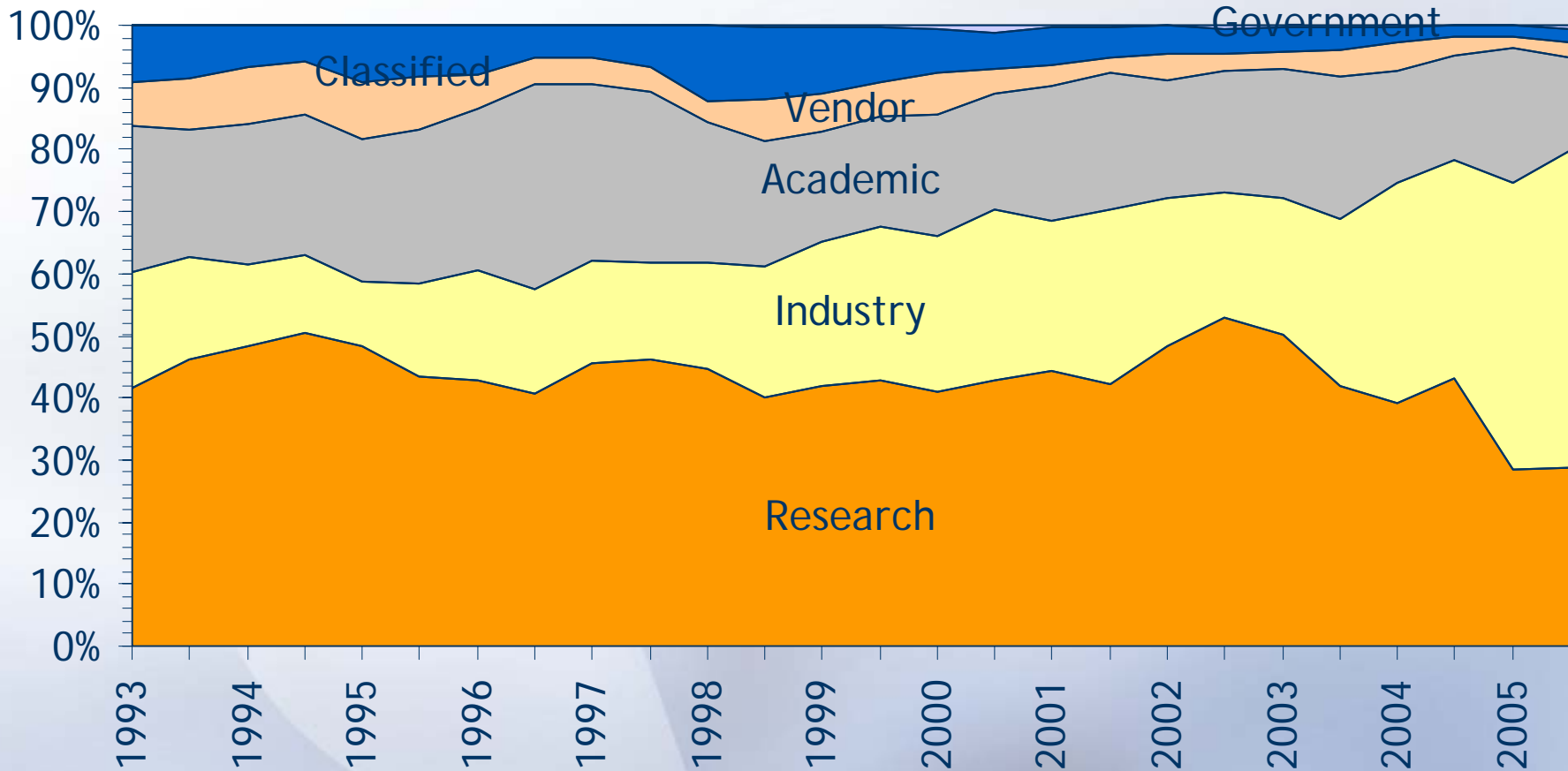


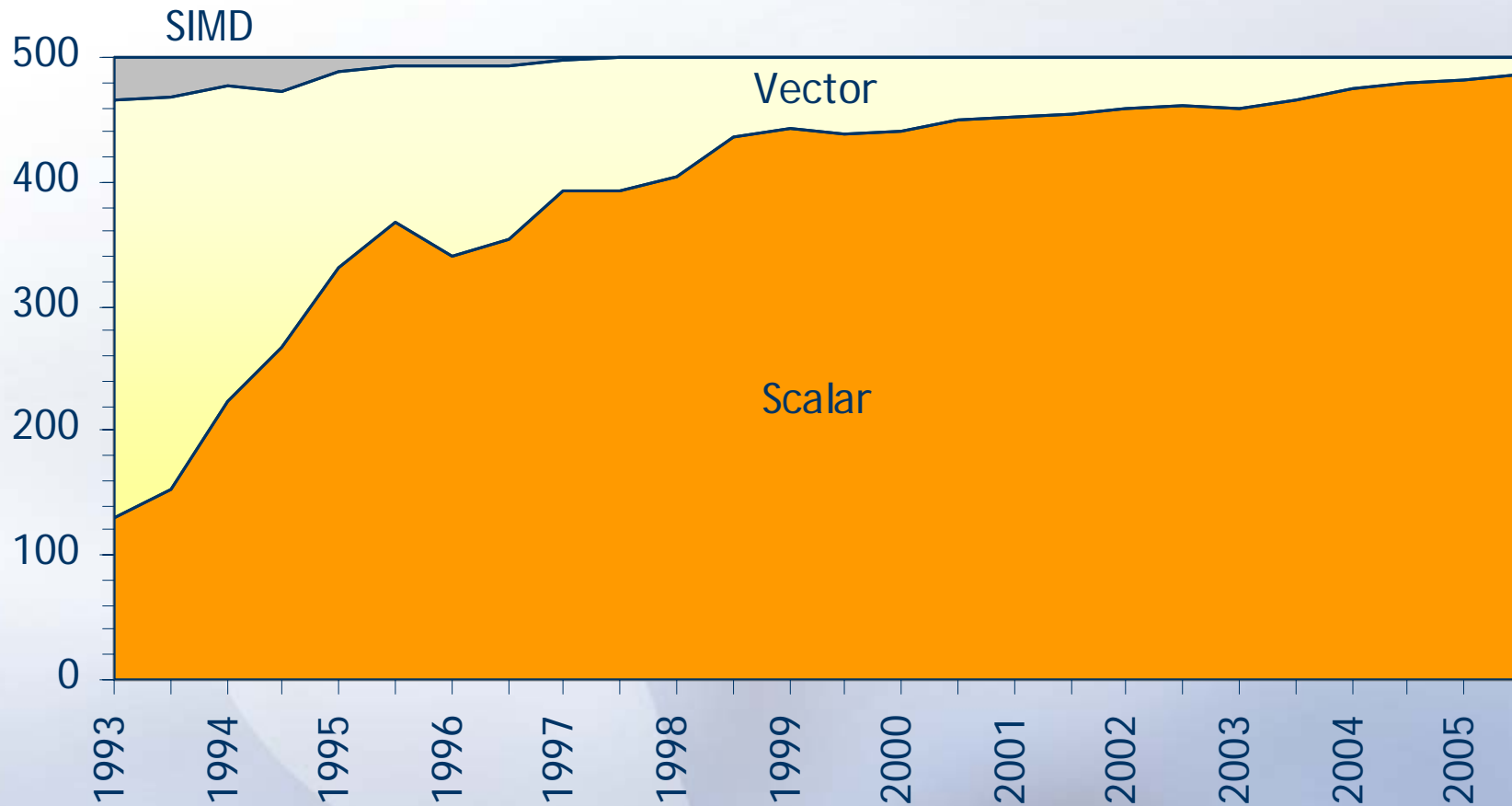
Producing Regions / Systems

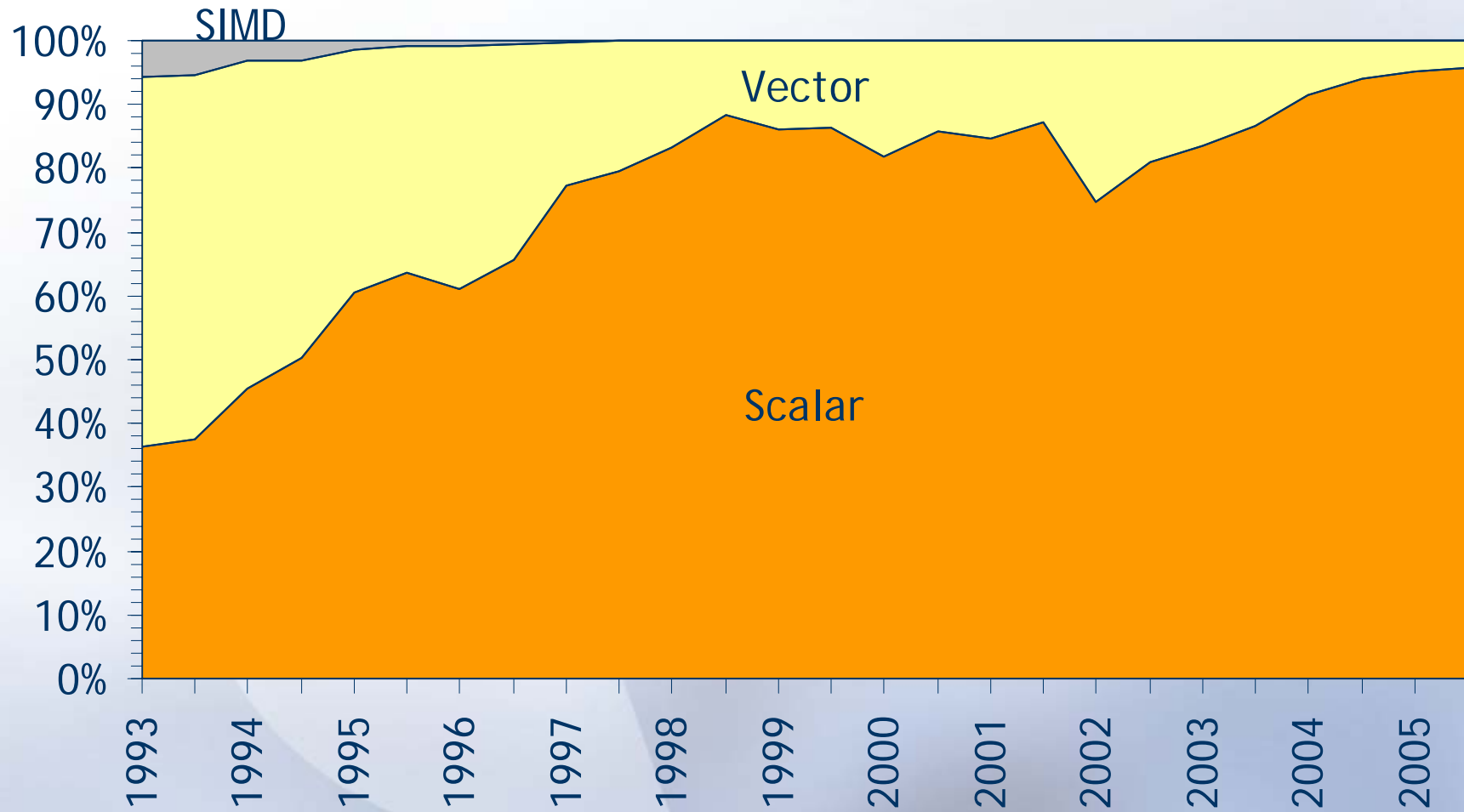


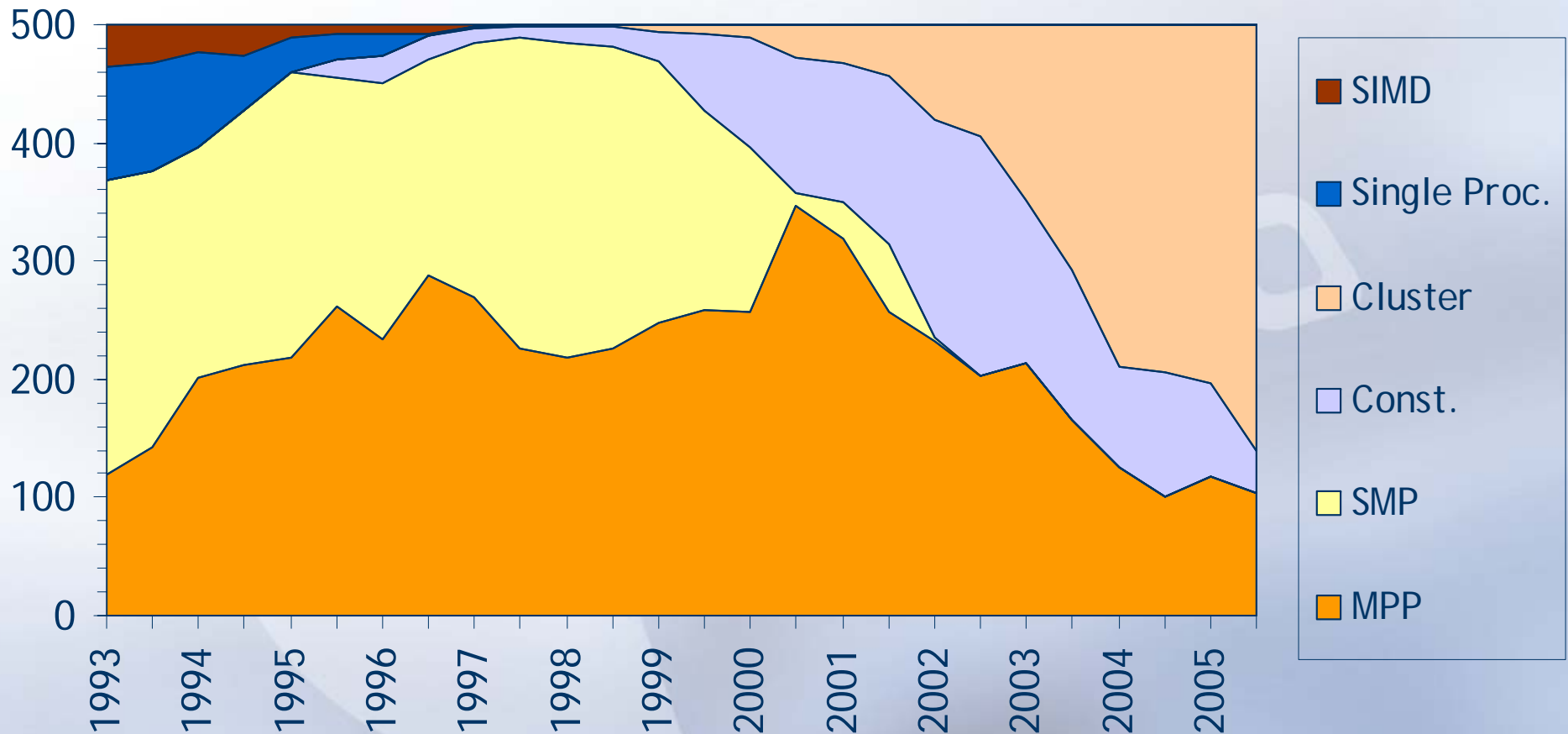


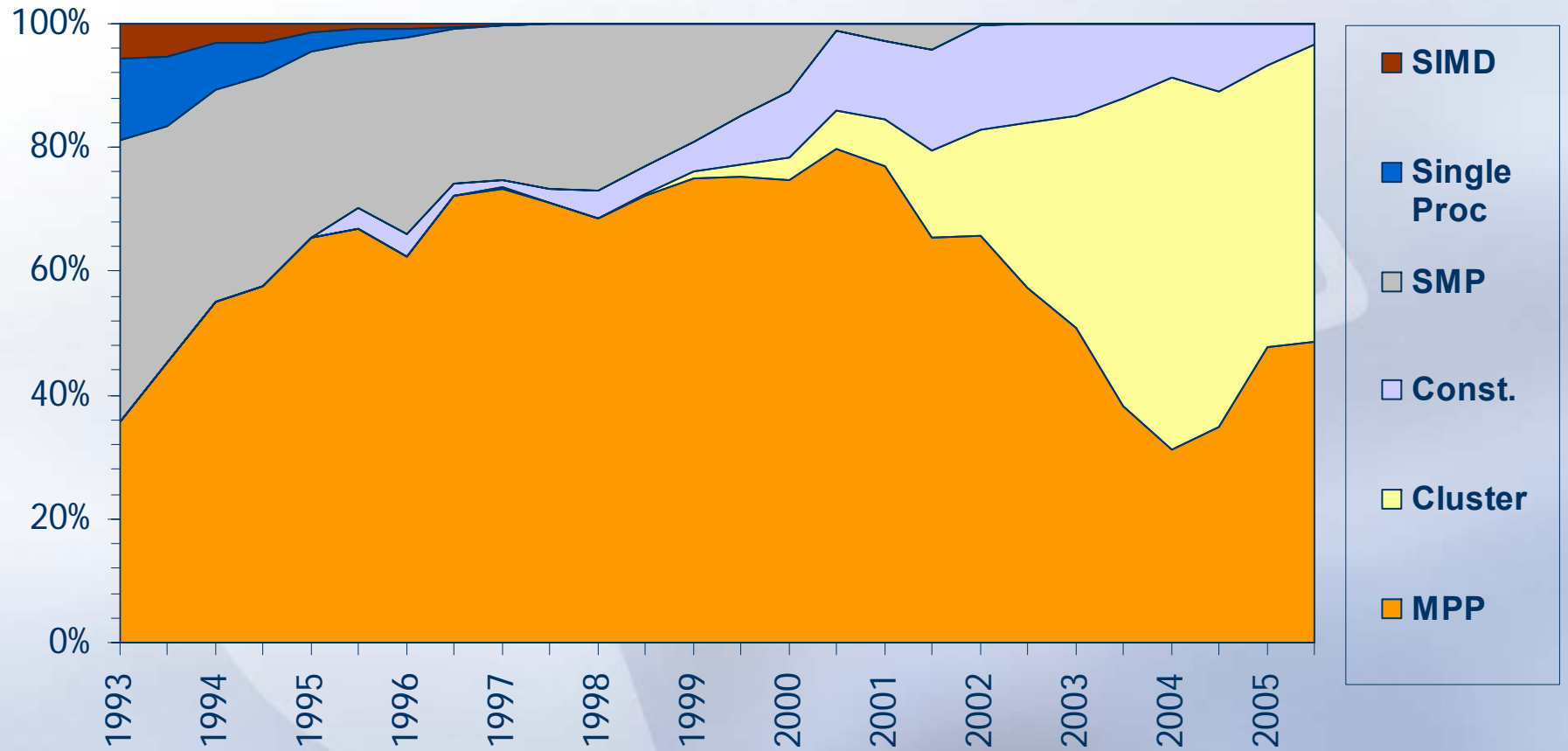




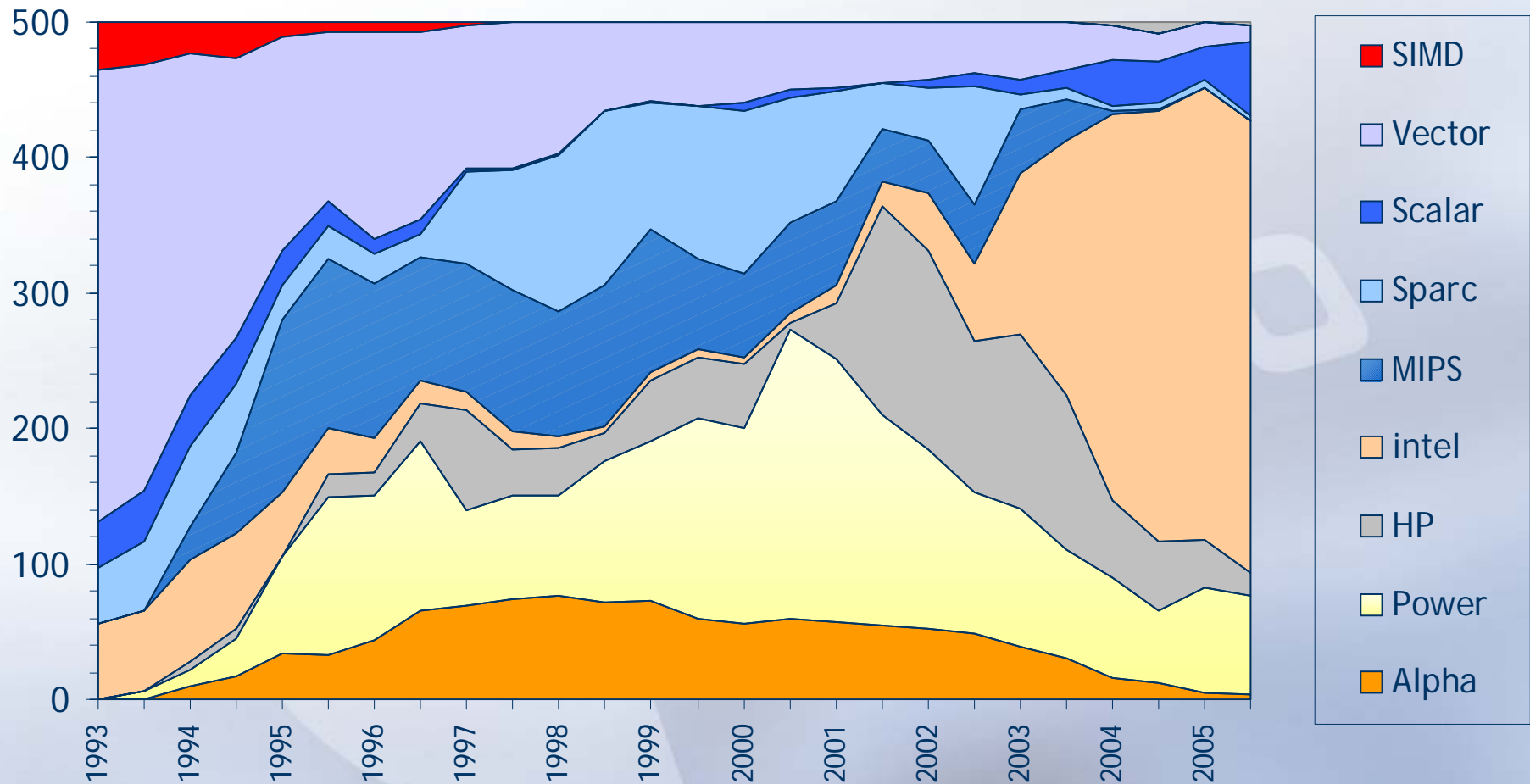


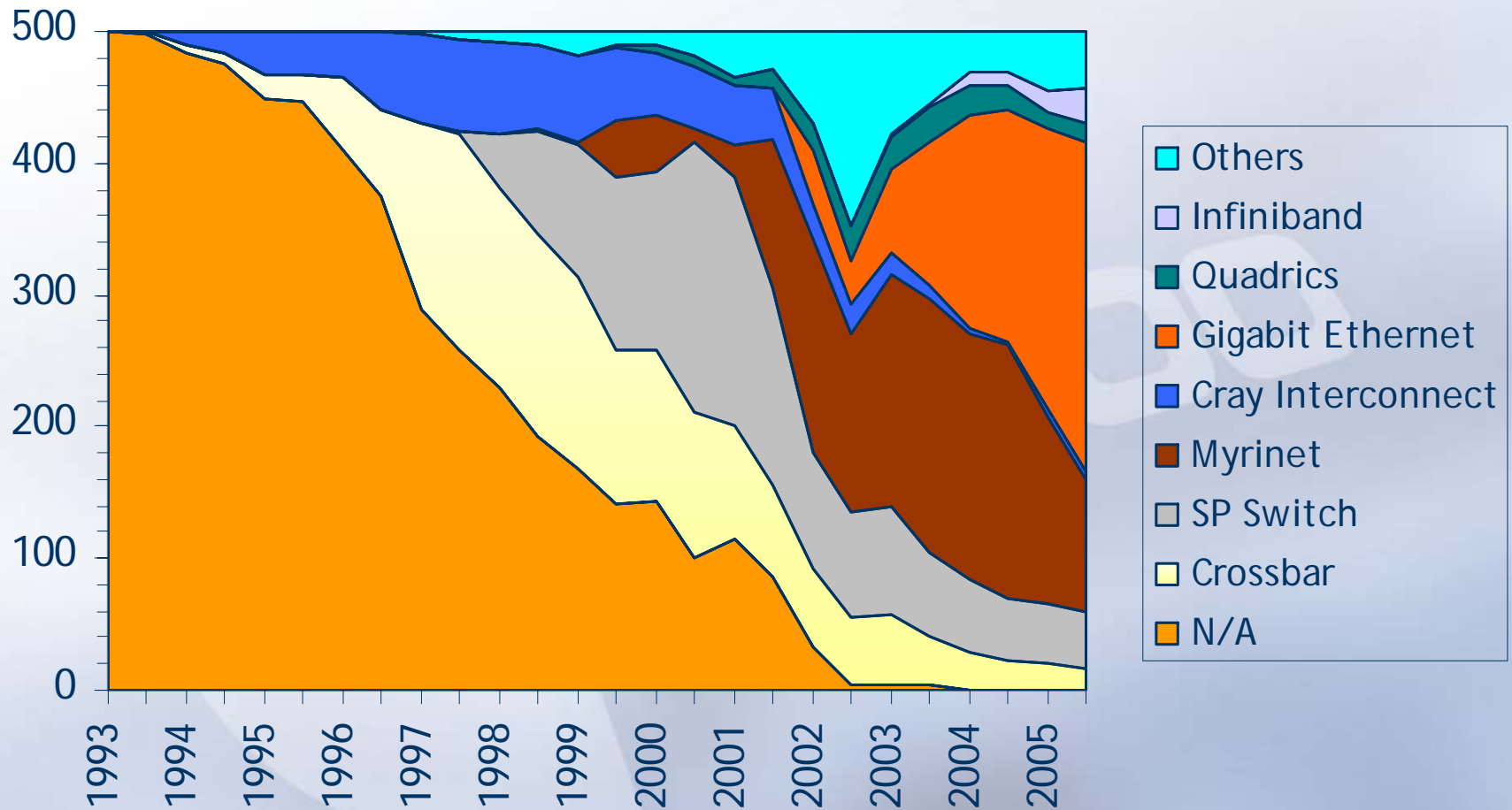


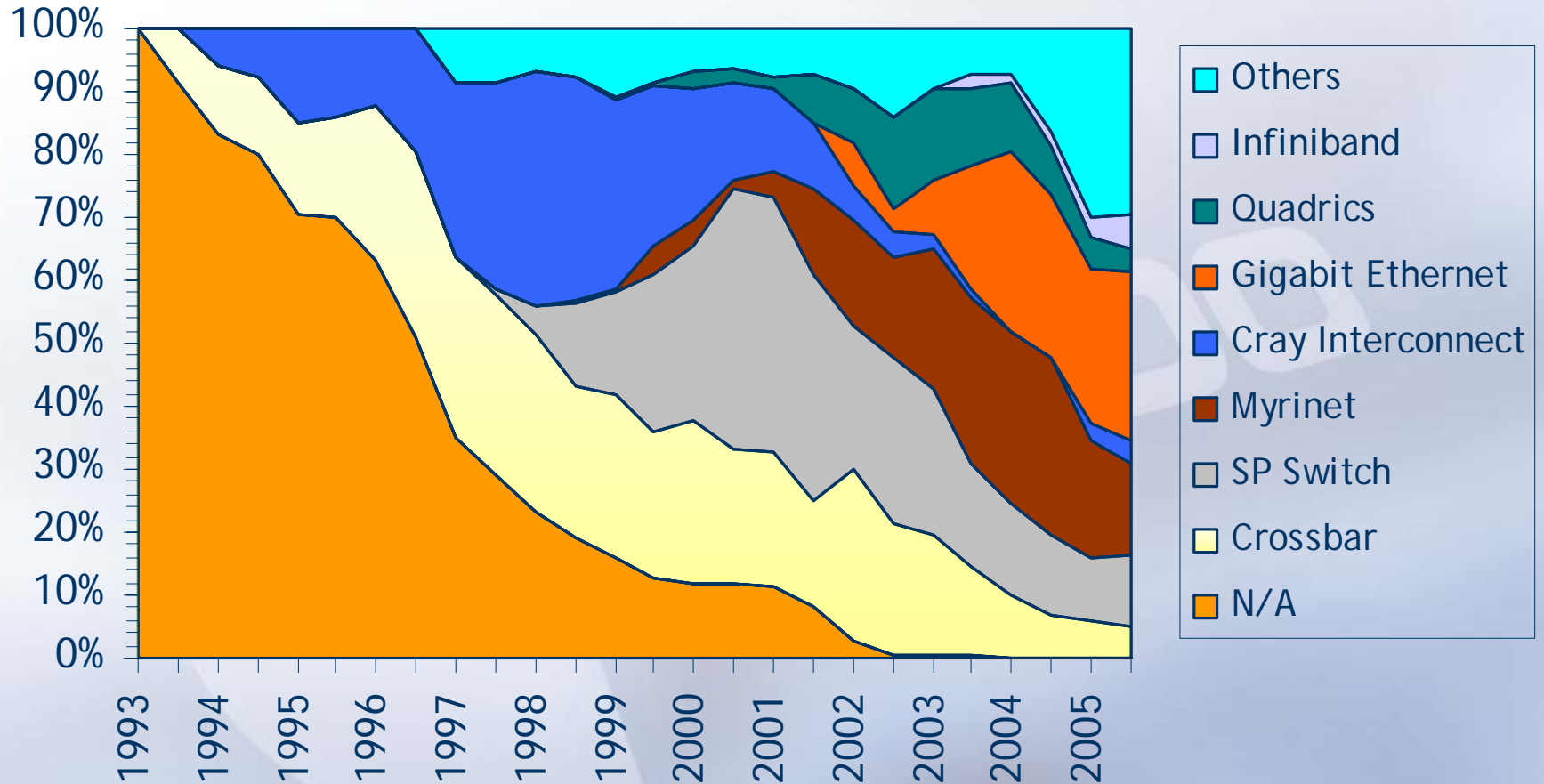


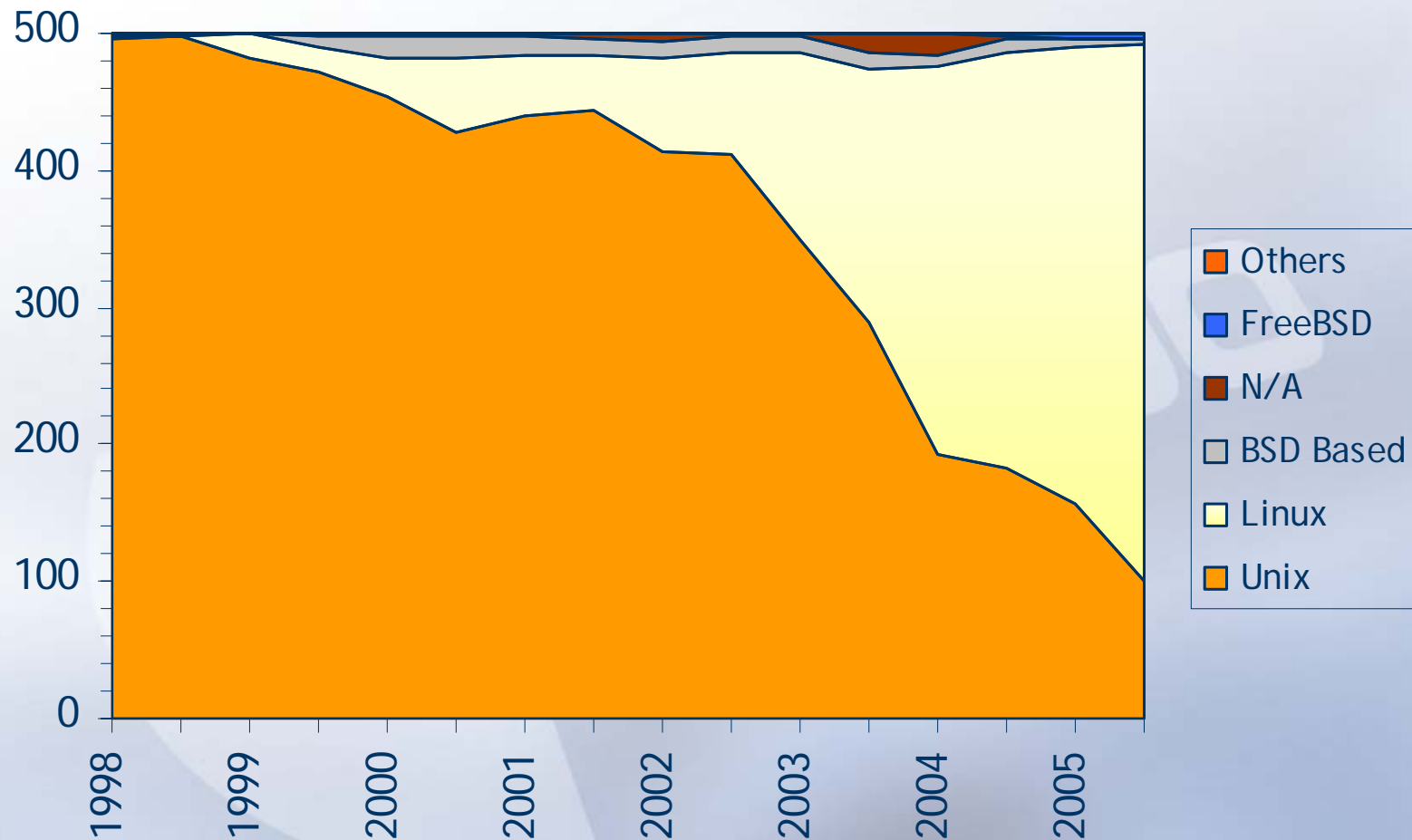


Processor Types











www.top500.org

TOP500 Supercomputer Sites - Mozilla Firefox

File Edit View Go Bookmarks Tools Help



Home About Current List Lists Database Submissions In Focus News Contact

PRESENTED BY UNIV. OF MANNHEIM UNIV. OF TENNESSEE NERSC/LBNL

TOP500 SUPERCOMPUTER SITES

The TOP500 project was started in 1993 to provide a reliable basis for tracking and detecting trends in high-performance computing. Twice a year, a list of the sites operating the 500 most powerful computer systems is assembled and released. The best performance on the Linpack benchmark is used as performance measure for ranking the computer systems. The list contains a variety of information including the system specifications and its major application areas.

TOP500 INFORMATION

26th TOP500 List released

The 26th TOP500 List was released during the Supercomputing Conference (SC|05) in Seattle, WA.

TOP500 Project at SC|05 in Seattle

The TOP500 Project and ISC2006 are exhibiting at SC|05 in Seattle (USA) November 12-18, 2005. Meet us at booth # 1646. The new TOP500 List will be announced during the TOP500 BoF session, Tuesday Nov. 15th.

TOP500 Birds of a Feather Session (BoF) at SC|05

This TOP500 BoF will present detailed analyses of the TOP500 and discuss the changes in the HPC marketplace during the past years. This includes updates on various benchmark initiatives such as the HPC Challenge benchmarks and the APEX-Map project. The BoF will give background information and explanation about the TOP500 project itself and is meant as an open forum for discussion

SUPERCOMPUTING NEWS

Editor's Picks

26th Edition of TOP500 List of World's Fastest Supercomputers Released: DOE/LLNL BlueGene/L and IBM gain Top Positions

The No. 1 position was again claimed by the BlueGene/L System, a joint development of IBM and DOE's National Nuclear Security Administration (NNSA) and installed at DOE's Lawrence Livermore National Laboratory in Livermore, Calif. BlueGene/L also occupied the No. 1 position on the last two TOP500 lists.



Done

start Windows Ex... ApexMap111105... TOP500 Superco... Inbox for estroh... Microsoft Power... 3:37 PM